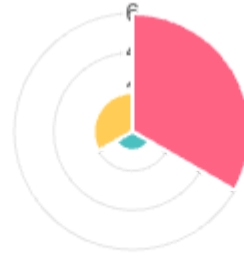




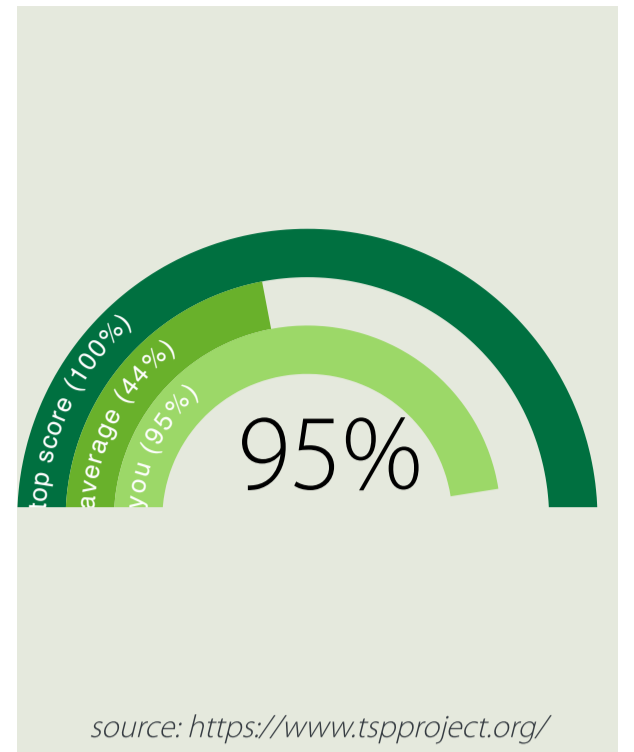
S&C Electric

ESG/Environmental Practices

2022-11-16

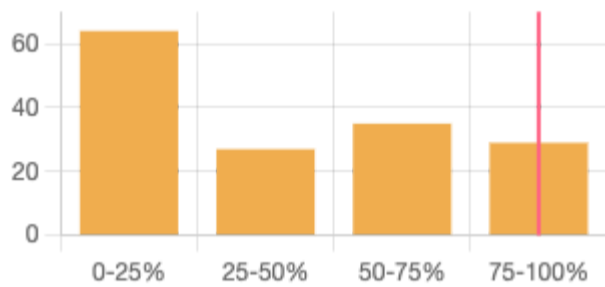


Energy & GHG Emissions
Water Waste
Improvement planning



source: <https://www.tspproject.org/>

Environmental, Social and Governance (ESG) Core



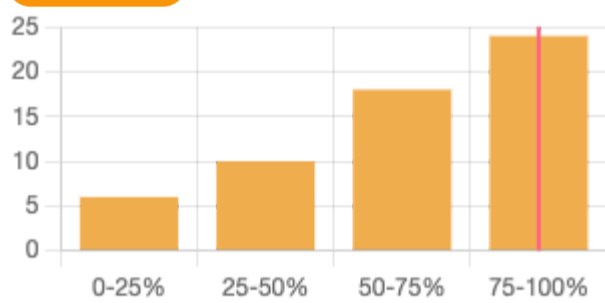
95%

Benchmarking is based on responses from 155 companies responding on practices in the industry segment.

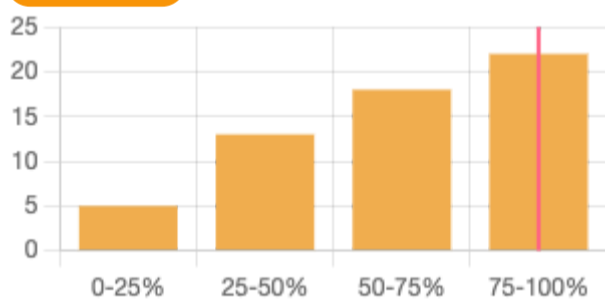
General manufacturing



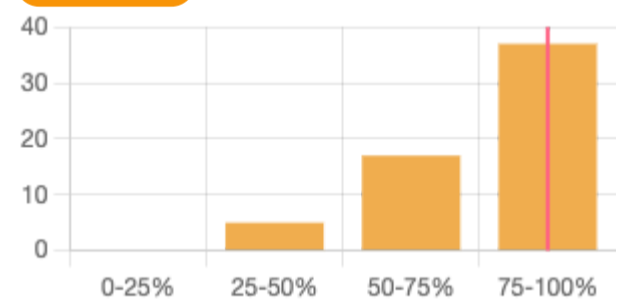
Product/process design



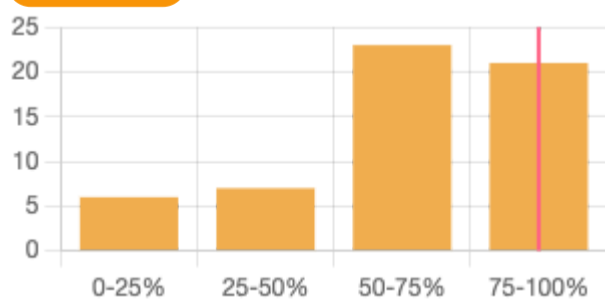
Sourcing



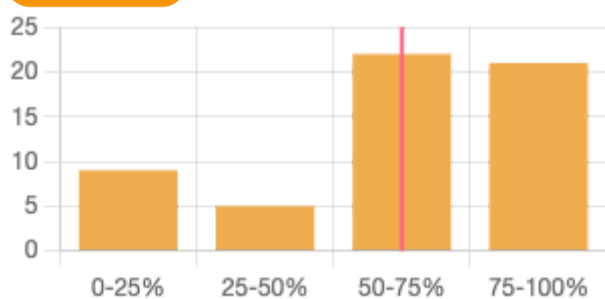
Production



Distribution & shipping



End-of-life



Benchmarking is based on responses from 59 companies responding on practices in the industry segment.